



ROTHSCHILD
FOUNDATION

GRANTS REVIEW



Contents

Introduction	5
Lord Rothschild	7
Culture	9
Grants awarded	10
Food Systems	20
Grants awarded	21
Young People	24
Grants awarded	24
Community Fund	27
Other grants awarded	33
Cost of Living Response	33
Working with Waddesdon	36
Rothschild Foundation Trustees	42
Rothschild Foundation Staff	43



Xavier Veilhan, *La Carrosse*
(*Red Carriage*), 2013 -14 ©
Veilhan / ADAGP, Paris, 2013.
Photo: Darren Merriman

Back cover: Michael Craig-Martin, *Stiletto (red)*, 2021 © Michael Craig-Martin. Photo: Darren Merriman

Introduction

Alongside its care and management of Waddesdon Manor, near Aylesbury Buckinghamshire, the Rothschild Foundation operates a grants programme for the charity sector. This review covers the activity that the Foundation has supported from March 2023 – February 2024 as well as highlighting examples of the impact that funded activities are having in each of the Foundation’s priorities. A detailed review of activity at Waddesdon can be found in Waddesdon Manor’s Annual Review [Waddesdon.org.uk](https://www.waddesdon.org.uk)

The Rothschild Foundation’s programme of grant-giving is rooted in the Rothschild family traditions of passionate engagement with the arts and the natural world, and good citizenship in its home county of Buckinghamshire. Grants awarded contributed to ongoing themes of artistic excellence and access to the arts by reaffirming established relationships and initiating new activity with organisations not previously funded by the Rothschild Foundation. An exciting development arose with long-standing grantee Art History Link-up, using the Collection at Waddesdon Manor to inform a programme of Art History engagement for GCSE students from local Buckinghamshire schools. A further four years of funding to the National Gallery demonstrated the type of longer term, flexible funding that the Foundation understands is so important to the sustainability of the charity sector.

The urgency of the climate crisis prompted a 12-month review of the Foundation’s food systems activity. This resulted in Trustees approving the development of a strategy which will double down on the agricultural transition in England to enable food and farming systems for a regenerative future. With headline themes of farmer knowledge exchange, accelerating innovation through pilots and research, and advocacy and public engagement, initial grants were made to support knowledge exchange for Buckinghamshire Farmer Clusters and, at a national level, the Nature Friendly Farmers network.

This year the Foundation committed financial and staff resource to a programme of Equity and Inclusion across its staff, audiences and funding. This included delivering the first year of the Pathways training programme, offering paid opportunities in the charity and heritage sector for young people. Within grantmaking, the Foundation Practice Rating provided a helpful framework for improving diversity, transparency and accountability, which will continue to be built on in future years.



Hannah Rothschild and AHLU alumni students in discussion at Christie's.



South front of Waddesdon Manor. Photo: Darren Merriman

Lord (Jacob) Rothschild (1936-2024)



Lord Rothschild by Yoray Liberman

It was with great sadness that the Rothschild Foundation announced the passing of its Patron and Chair Lord (Jacob) Rothschild OM, GBE, CVO, at the end of February 2024.

Jacob Rothschild was a businessman, entrepreneur, philanthropist and cultural leader, who made a profound difference to many areas of British life. In the cultural sector, he led, amongst other national institutions, the National Gallery and the National Lottery Heritage Fund. He was pivotal in the restoration of Somerset House, and helped secure the public display of the Gilbert Collection, ensuring the future status of the Courtauld Institute of Art. Relationships with these key institutions, and many others, continue to be developed through the Rothschild Foundation's grant-making, alongside a deep commitment to the Rothschild family's home county of Buckinghamshire.

His overarching philanthropic commitment was to Waddesdon Manor and the Waddesdon Estate where he was actively involved in improving the environment through better farming practices and broader philanthropic activities. Under his ownership, there was a concerted effort to farm regeneratively, inspiring the Rothschild Foundation's support for organisations seeking to further regenerative food and farming systems.

The Rothschild Foundation is committed to continuing his legacy, and will forever be inspired by his visionary leadership.

Culture



Culture, heritage and the arts are cornerstones of the Rothschild Foundation's grants programme. Our funding includes support to renowned cultural institutions as well as grass-roots projects that have a direct impact on creativity in communities. We are committed to investing in a cultural sector that is secure and stable, able to innovate and experiment, and most importantly, is accessible to all.



AHLU Class at the National Gallery.
Photo: Ed Hands



Catherine Goodman, *Do you remember me...* Exhibition at the Coach House Gallery, Waddesdon. Photo: Darren Merriman

Grants Awarded



240 PROJECT

To support the West London Arts and Health Activity Centre to be a safe and friendly space offering a variety of arts and well-being activities to those affected by homelessness.

ART & CULTURE FINANCE

Towards the set-up of Arts & Culture Finance which provides social impact investment funds.



ART HISTORY LINK-UP

Project funding for the Introduction to Art History courses and qualifications for state school students, in partnership with museums, galleries, and schools, and a campaign to 'Save Art History'.

Introduction course at Dulwich Picture Gallery. Photo: Ed Hands



ART HISTORY
Introduction course at Dulwich Picture Gallery. Photo: Ed Hands

LINK-UP
AHLU class at the Courtauld Institute. Photo: Ed Hands



BRITISH COUNCIL

Supporting a commission 'Listening All Night to the Rain' by Sir John Akomfrah for the British Pavilion at the Venice Biennale and the Venice Fellowships Programme 2024, providing opportunity for young artists to develop their careers.

BUTRINT FOUNDATION

Core funding for the Butrint Foundation to support the preservation and development of the Butrint World Heritage Site Albania.

CHARITIES AID FOUNDATION

A contribution to Vogue World London and its support of London cultural organisations.



COURTAULD INSTITUTE OF ART

To support the Frank Auerbach exhibition at the Courtauld Gallery.



FITZWILLIAM MUSEUM

Towards the production of distinctive digital film content at the Fitzwilliam Museum.

GIVE A BOOK

Funding the delivery and initiation of reading for pleasure projects within prisons.

GLYNDEBOURNE

Towards Glyndebourne's participation and audience outreach projects in East Sussex.

GOOD CHANCE

Funding in support of 'From Here On', an international participatory public artwork exploring the history of the Kindertransport and contemporary migration.

HAY FESTIVAL OF LITERATURE

Support for the expansion of Hay's schools programme, offering school children across the UK access to an annual programme of events that widen cultural participation, and help break down barriers to reading, writing and the arts.

HOLBURN MUSEUM OF ART

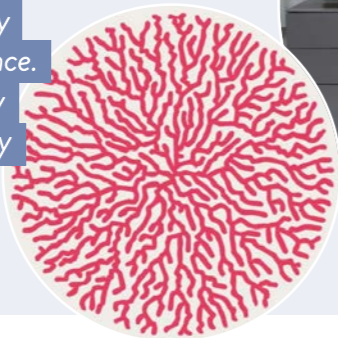
Core funding to support the Holburne Museum of Art in Bath

HYPHA STUDIOS

Having invested in Hypha Studios start-up costs, the Rothschild Foundation further supported expansion of the charity this year. Hypha Studios matches artists with empty spaces which can be used as studios or for exhibitions. In return for the free space, creatives are encouraged to organise public events and exhibitions, enriching the local community and contributing to local regeneration. With core funding, Hypha Studios could expand its staff team and meet growing interest from landlords and artists across the UK. It now works in 27 locations and supports almost 400 individual artists producing over 180 events for local communities.



“Through my first months at Hypha, my practice has greatly developed. I have increased my public base, sales and international presence. The studio is beautiful and spacious. Every person that visited the space was positively surprised and congratulated me for this important professional achievement.”



Luca Bosani, Hypha Studios supported artist



LITTLE SPARTA TRUST

Core funding to support the maintenance of Little Sparta, the garden of the late Ian Hamilton Finlay, poet and writer, and to prepare the garden for public opening in June. Little Sparta is a heritage asset in Lanarkshire, Scotland.

LONDON LIBRARY

Funding was awarded to a new Learning and Participation space, fitted out with digital and audio equipment to enable the library to reach new audiences through online workshops and festivals.

NATIONAL GALLERY

Funding for the National Gallery’s Director’s Circle, providing annual support to realise Director, Dr Gabriele Finaldi’s vision. The Rothschild Foundation has had a longstanding partnership with the National Gallery, and Trustees have played a significant leadership role for the organisation too. In 2021, the Rothschild Foundation contributed to the redecoration of the gallery’s central hall, named the Jacob Rothschild Room in recognition of his tenure as Chair.

Previously through the Director’s Circle the Foundation has invested in the post of Associate Curator of Renaissance Painting as well as the conservation of Piero della Francesca’s The Nativity. Over the next four years, in conversation with Trustees’, the Director’s Circle membership will be allocated to significant projects or exhibitions.



“The support of The Rothschild Foundation has been transformative for the National Gallery, from behind-the-scenes work in conservation and framing, to exhibitions bringing new perspectives to our great works of art.”

Gabriele Finaldi Director, The National Gallery

NATIONAL PORTRAIT GALLERY

Towards the continuation of Citizen UK, a community research and outreach project which seeks to extend the National Portrait Gallery’s collection and connection with diverse audiences.



ORIEL COLLEGE



Capital funding towards the development of the Senior Library.

ROYAL ACADEMY OF MUSIC

Supporting the creation of a new Digital and Media Composition Suite to meet the growing demand for digital composition skills.



TATE

Supporting the Tate Collective, a free to join membership scheme for 16–25-year-olds which provides skills workshops, access to exhibitions and careers advice.

TEAMWORK FINE ARTS SOCIETY

Core support of the Jaipur Literature Festival, held at the British Library.

THE BENEDETTI FOUNDATION

Core support for the Benedetti Foundation to provide music education sessions for young people and continuing professional development for music teachers.

THE LINE ART WALK

Core funding for The Line's free open-air public art programme which runs between the Queen Elizabeth Olympic Park and the O2 in East London.

THE QUEEN'S READING ROOM

Supporting the brand-new charity, launched by Her Majesty Queen Camilla in February 2023, a book club that champions reading in the UK and abroad.



THE WALLACE COLLECTION

Funding the Curator of Decorative Arts and exhibition support for *Portrait of Dogs: From Gainsborough to Hockney*.

UNTOLD NARRATIVES CIC

Untold facilitated a collective diary by Afghan women writers during the fall of Kabul in 2021, which will be compiled and published in a book.

ZURBARAN TRUST

Towards the acquisition of a tapestry commissioned by Henry VIII.



ROYAL BALLET SCHOOL

Capital funding for the refurbishment of the School's swimming pool at its White Lodge campus in Richmond Park.

ROYAL OPERA HOUSE

Investment in Royal Opera House Stream, an online platform sharing opera and ballet productions.

ROYAL SHAKESPEARE COMPANY

Towards the International Fellowships programme, enabling artist led research and talent development for interdisciplinary artists.

SIR JOHN SOANE'S MUSEUM

Contributing to the production of the Museum's Annual Review.

Buckinghamshire



The Rothschild Foundation’s support of the local cultural sector in Buckinghamshire contributes to a growing cultural offering in the county. Alongside Pinewood Studios, set to be the largest film studios in the world, and renowned museum and heritage sites, including Waddesdon Manor, the county includes many small to medium sized cultural organisations that connect to local communities. The Foundation’s funding builds the sector, supporting ambition and reach.

AMERSHAM MUSEUM

Core funding to build the museum’s part-time staff team, enabling them to provide sessions and facilities for researchers, artists, people with special educational needs and disabilities, and resources for SEN and secondary schools.

ARTIS FOUNDATION

Funding to expand a therapeutic and rehabilitative stitching programme at HMP Grendon. The charity offers accredited training and a small salary to prisoners creating high-quality hand-stitched items.

BUCKINGHAMSHIRE CULTURE

As our local cultural development agency, Buckinghamshire Culture plays a central role in our work to support the resilience of arts organisations across the county. In addition to our three-year core funding commitment to Buckinghamshire Culture, a grant was awarded to enable them to deliver a series of practical audience development workshops followed up by more in-depth bespoke advice sessions for ten creative organisations.

The training covered the basics of data collection and the value of data in communicating with and attracting new audiences. Particular focus was given to organisations in High Wycombe, an area of

economic deprivation where opportunities for supporting wellbeing through cultural engagement are ripe but at risk due to the fragility of the cultural offer. Through support of this project, both the Rothschild Foundation and our cultural partners gained valuable insight into understanding barriers to engaging with the arts, and where solutions can be scoped out by working collaboratively. Initial ideas for joint marketing or a digital passport to access affiliated cultural organisations are being scoped.

Buckinghamshire Culture also continues a wider programme of sector development with regular advice sessions, networking and an annual conference for the creative sector.

CHILTERN MUSIC THERAPY

Core funding to support the organisation’s Chesham hub and hiring of new staff, including an environmental sustainability lead.



CHILTERN OPEN AIR MUSEUM (COAM)

This year Chiltern Open Air Museum embarked on a series of Campfire Heritage Stories, the first of which got underway in March. Three storytellers and members of the Chilterns’ community whose heritage comes from further afield and who have made Buckinghamshire their home or place of work, shared their life and experiences in a live event with visitors to the Museum.



“I really enjoyed listening to everyone. You have created a fantastic project and I loved the inclusive nature of the format and fact that it’s casual. Thank you for asking me... I feel so honoured.”

Sejal Sachdev -Storyteller

COAM will make the stories available online and on tablets with headphones within the museum itself. Campfire Heritage Stories aims to share local histories not yet represented in COAM’s collection and helps to bring new audiences and age-groups to the Museum.



CREATED SOUTH EAST C.I.C

Funding for Focussed Beats, a music project delivered in three educational settings in Buckinghamshire, offering musical activities to autistic spectrum condition children.

Participation programme which focuses on reaching young people facing barriers to participation in the arts.

HOLY COW COMMUNITY EVENTS

Core funding towards cultural engagement activities in Buckinghamshire.

GARSINGTON OPERA

Project funding towards the GO Learning &

KESTREL THEATRE COMPANY

Funding to support a multi-year programme of theatre delivered in collaboration with HMP Spring Hill, with performances in local arts and cultural spaces.

In December 2023, Kestrel presented a festive performance in collaboration with the Irene Taylor Trust at HMP Spring Hill. Prisoners had worked with a professional playwright, director, designer and theatre producer to create the piece. With an original script, newly composed songs and raps, the production was an uplifting tale of connection at Christmas. The project had been specifically designed to support the men to develop teamwork and interpersonal skills, and helped them reconnect

with family and friends in the community beyond the prison gates.

This production is the first in a series of theatre-based activities led by Kestrel Theatre Company funded by the Rothschild Foundation. Over the coming three years, Kestrel will run weekly drama groups where HMP Spring Hill residents can build their performance skills and confidence. Together they will work towards creative performance with community partners, such as Buckinghamshire Libraries, Wycombe Arts Centre and Aylesbury Waterside Theatre, made possible through HMP Spring Hill's status as an open prison. Kestrel aims to diversify voices in the local arts scene and shift perceptions of what can be achieved by people with experience of the criminal justice system.

MILTON KEYNES ISLAMIC ARTS HERITAGE AND CULTURE

Funding towards Stories On The Plate project which supports female Afghan refugees in Aylesbury through a programme sharing creativity and food from different cultures.



NATIONAL PARALYMPIC HERITAGE TRUST



Having supported the National Paralympic Heritage Trust's (NPHT) digital engagement work since 2019, this three-year grant renews our focus on creating enriching and accessible cultural experiences in Buckinghamshire and further afield.

Through a specially developed inclusive recruitment process, NPHT have engaged four local disabled

people to work with digital experts and lead 3D digital curation of paralympic heritage. The trainees have already embarked on an induction process which includes general office skills, as well as specialist heritage careers training in object handling and curation. Over the next three years the trainees will help NPHT to diversify representation of Paralympic heritage to include new sports and they will ensure that the experiences of disabled people are at the heart of how they are researched, interpreted and presented.

"I enjoy all aspects of being a trainee for the NPHT such as box listing, interacting with the public, and learning the more technological side such as scanning and photogrammetry. It has helped me to increase my confidence when interacting with the public, my fellow work colleagues, and increasing my knowledge of history. I still have a long way to go but I have improved more [in confidence] in the few months working for the NPHT than I have most of my life"

Thomas, Museum Trainee, aged 22

NPHT have embarked on an engagement programme that builds connections between six Buckinghamshire heritage partners, including Bucks Old Gaol and Milton's Cottage, and their local SEND schools. Each is scanning objects ready to be included in virtual galleries and will collaborate on a sensory needs map and sensory workshop. All partners are contributing to a consultation that will inform a flexible work-placement scheme for

SEND young people to develop their talents in the heritage sector.

Since the Rothschild Foundation's grant was awarded to NPHT, they have successfully secured additional support from the Wolfson Foundation and Esmee Fairbairn Collections Fund, Museum Association, which will extend and enhance the project.

WYCOMBE ARTS CENTRE

Support for Wycombe Arts Centre to offer a wide range of artistic events and participatory opportunities for creatives in the local area.

WYCOMBE MUSEUM, WYCOMBE HERITAGE & ARTS TRUST

Organisational development support to explore business planning in order to build a sustainable future for a key community asset.

Food Systems

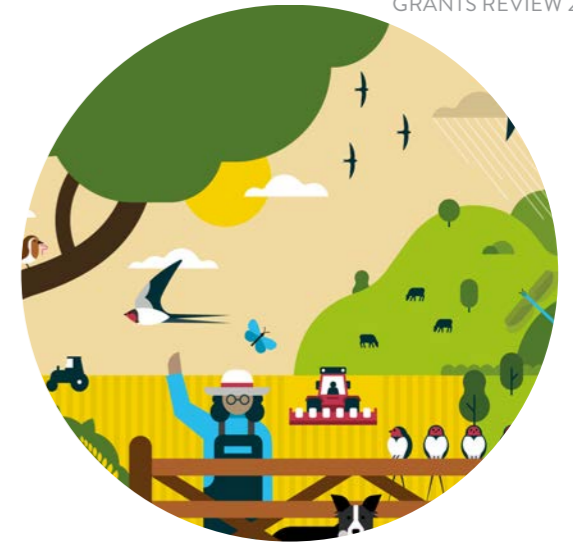


This year, the Rothschild Foundation has focussed on exploring how resource can best contribute to a future, more sustainable, food system. The past 12 months has seen Foundation staff, with support from consultant Fiona Gately, review its funded activity and consult with a wide range of stakeholders working within the food and farming sector. Fusing the long environmental history of the Rothschild Family and the current opportunity for philanthropy in mitigating the devastating impact of climate change, the Foundation’s future strategy will consider how resource can support the transition to regenerative food and farming systems. This will be approached through three pillars of work which will be refined as the strategy develops: enabling knowledge exchange and education for farmers; accelerating innovation through pilots and research; and advocacy, convening and public engagement.

The geographic focus of this work will be on England with our local work in Buckinghamshire playing a key role in showcasing the benefits of short supply chains for producers and communities.



Grants Awarded



NATURE FRIENDLY FARMING NETWORK LIMITED

Unrestricted funding to support the development of the Nature Friendly Farmers Network in England.



RESTORE HOPE

The funding for Restore Hope aims to increase the organisation's capacity to produce and distribute food from its site in Chesham. It is a poverty reduction charity, so the majority of the food is sent to local families experiencing hard times. The funding has enabled additional staff capacity and expertise, resulting in over £3,000 worth of grown food distributed to local families, the introduction of growing and cooking classes, and an increase in

volunteers. Increased staff capacity has enabled opportunities to improve soil health and restore grasslands on the estate, alongside supporting around 500 families on low income through food, signposting and social activities. The dual focus on environmental and social improvement has yielded positive results with local people and voluntary organisations. In the next year, Restore Hope aims to build on the interest and engagement of local communities by setting up a food hub in the nearby town of Amersham.

ORGANIC RESEARCH CENTRE

Project funding to support Feed the Soil, a research and knowledge exchange project for novel organic waste management strategies to build healthy soils and healthy crops.



PASTURE-FED LIVESTOCK ASSOCIATION

Project funding for research led by the Consortium for Labelling for the Environment, Animal welfare, and Regenerative farming (CLEAR) aimed at reviewing current major environmental/eco food labelling schemes in order to make recommendations to policy makers.



REAL FARMING TRUST

Towards the event costs of the Oxford Real Farming Conference January 2024, particularly helping with accessibility such as live-streaming, bursaries and associated staff time.

THE GAIA FOUNDATION

Funding to support We Feed the UK, a spoken word and photography project which brings together the arts and environmental sectors to champion the farmers trailblazing regenerative farming.



Buckinghamshire



FARMER CLUSTERS

In December, two significant grants were awarded to support farmers to be more sustainable in Buckinghamshire. The Chiltern Conservation Board and the River Thames Conservation Trust support around 30 farmers, brought together to share best practice, network, and learn. The funding addresses a strategic pillar of the Rothschild Foundation's regenerative food and farming strategy, exploring the role of local farmer clusters in sharing knowledge and accelerating innovative farming practice. The grants will have differing focusses but the overall aim is to continue helping farmers on their journey to financial and environmental sustainability.



The Chilterns Conservation Board Farmer Cluster equips farmers to understand how they can contribute to mitigating the climate emergency through improving the soil. The River Thames Conservation Trust Farmer Cluster runs the SusThame project to optimise food production, environmental benefits and farm income by capitalising on a collaborative-cross-farm upskilling, information generating and market-engagement approach.

GLOBAL FEEDBACK

Supporting the next iteration of Green Futures which matches young people with internships focussed on sustainable activity. The cohort of organisations hosting internships will also come together to engage with the people it supports around healthy, sustainable food.

SOUTHCOURT BAPTIST CHURCH

Core funding for Bridging the Gap, a food service with wrap-around support for local people.

GROW TOGETHER BUCKS

To transform Grow Together Bucks and Grow to Give from successful startups into a sustainable organisation engaging with more Buckinghamshire residents, helping them to grow and distribute healthy and sustainable food.



Young People



Since 2021, the Rothschild Foundation has prioritised opportunities for young people as a means to address the disproportionate impact of the coronavirus pandemic on the younger generation. Since then £1.4million has been invested directly in youth organisations and those helping young people take their next steps in education and employment. At the end of the year in focus, we will take a new approach prioritising young people in our cultural and regenerative food and farming grants, and through programmes offered at Waddesdon, such as our Training Pathway. Investment in the Young Futures Fund (more details below) will also empower young people to tackle concerns impacting their peer group in the local community.

Grants Awarded

CIVIC FUTURE

Core support for Civic Futures, a charity aiming to strengthen public leadership and civic society in the UK.



ETON COLLEGE

Funding to endow in perpetuity one pupil's place at a new free school to be opened in Middlesbrough by Eton College in partnership with Star Academies.



QUINTESSENTIALLY FOUNDATION

Towards the Quintessentially Foundation Bike Ride which is raising money for Project Firefly, a fund supporting youth organisations in London.

Buckinghamshire



HEART OF BUCKS COMMUNITY FOUNDATION

Together with our partners at the Heart of Bucks community foundation and Youth Voice Bucks, the Rothschild Foundation contributed to the formation of the Young Futures Fund.

Aiming to direct investment towards issues that matter most to young people, the Young Futures Fund will be led by a group of informed and passionate young people aged between 16-24 years.

The diverse youth panel members are at varying stages of their education and employment, and have first-hand experience of neurodiversity, disability and housing support in the local area.

Guidance on charitable operations, and research and data insights of local needs have been shared with the panel, but the decision for how funding is allocated to youth projects is in their hands.

The Young Futures Fund panel has devised their own charter agreeing to work together respectfully and with an awareness of other experiences and viewpoints. Key issues the group would like to address include; money management, support at transitions, digital well-being, vaping and tackling discrimination. The first grants awarded to organisations addressing these concerns will be made in May 2024. The Young Futures Fund is the Rothschild Foundation's first exploration of 'participatory grant-making', and extends our commitment to equality, diversity and inclusion in our funding.

BUCKINGHAMSHIRE MUSIC TRUST

Financial support for Bucks Music Trust's bursary programme, ensuring that pupils from low-income families can continue to access music tuition in the cost of living crisis.



BURNHAM YOUTH CLUB

Funding for the salary of the Lead Youth Worker for a 3-year period.

CHENIES AND LITTLE CHALFONT PAROCHIAL PARISH COUNCIL

In support of a paid volunteer post to administer and run the Family Food Hub.

CHILTERN RANGERS

Funding for Chiltern Rangers to expand their Stepping Stones project over three years, providing young people with volunteering opportunities and employability support for careers in environmental work and conservation.



COMMUNITY YOUTH VENTURES CIC

Funding for Community Youth Venture’s programmes with young people, including outreach, youth club sessions and sustainability focused skills and growing projects.

FRIENDS OF PEBBLE BROOK SCHOOL

Investing in staff who supervise and support students with special needs to run a community cafe and gain professional skills in catering and retail.

ST PETER'S CHURCH LOUDWATER

Capital funding for a kitchen renovation, making facilities fit for purpose for food related community activities such as a holiday lunch club, soup kitchen and cooking classes for healthy meals on a budget.

WYCOMBE WANDERERS SPORTS & EDUCATION TRUST

Towards a research project designed to explore the barriers to sports participation and physical activity for the youth sector in High Wycombe, sharing learning for the benefit of youth organisations across Buckinghamshire.

Community Fund



The aim of the Community Fund is to support Buckinghamshire based charities with flexible and multiple-year funding. The focus this year has been engaging under-represented organisations and communities, and improving the accessibility of the website and application forms. The work to ensure our funding reaches all communities in Bucks is on-going and forms a key element of our strategy going forward. During this year, we provided funding to 51 organisations in the county.

AGE UK BUCKINGHAMSHIRE

Supporting and empowering local older people to maintain their independence, health, wellbeing and sense of purpose, through information and advice, welfare-benefits support, befriending services tackling loneliness, and other life-enhancing services.

AYLESBURY WOMEN'S AID

Core support to work with and behalf of women and children who are or have lived with domestic violence.

BEDGROVE RESIDENTS & COMMUNITY ASSOCIATION

To construct a BMX/pump track in Bedgrove park, Aylesbury, for the health and social benefit of all local residents, the wider community and young people.

AYLESBURY HINDU TEMPLE TRUST

Funding for the delivery of a community event known as Holi - Spring Festival of Colours 2024 in Aylesbury.

BLACK PARK SHED

Project funding for training enabling shed members to learn new skills to complement the existing provision of craft and arts activity for local people.

AYLESBURY HOMELESS ACTION GROUP

Wellbeing support for employees at Aylesbury Homeless Action Group (AHAG) and Wycombe Homeless Connection (WHC), including access to an employee assistance programme.



BUCKINGHAMSHIRE OWL AND RAPTOR GROUP (BORG)

Funding to provide owl and raptor boxes, together with non-invasive monitoring equipment, for Waddesdon and other areas of Buckinghamshire.

BUCKS ASSOCIATION FOR THE CARE OF OFFENDERS (BACO)

Core funding to provide specified items or training programmes to support prisoners or prison leavers, with the aim of reducing reoffending.

CHILTERN CHILD CONTACT CENTRE

Core funding to provide a safe neutral space for all children to meet their mother or father that no longer lives at home with them due to a relationship breakdown.

CITIZENS ADVICE BUCKS

Core funding for the provision of free, confidential advice for everyone in Buckinghamshire.

CURLY TAILS

Support for porcine therapy in North Bucks, providing wellbeing support to various young people and adult groups.



DAYTOP MULTICULTURAL CENTRE CIC

Core funding for social activities, food provision and arts and culture programmes for the local community.

DEMENTIA CARERS RESPITE

Funding for respite breaks for carers who are responsible for looking after a loved one with dementia.

DSCVR CREATIVE CIC

Providing professional music studio sessions with youth mentoring, for young adults aged 12-18 from disadvantaged backgrounds in Buckinghamshire.

ENRYCH BUCKINGHAMSHIRE

Core funding to provide leisure and learning activities for isolated disabled people.

FAMILY SUPPORT GROUP

Core funding to work with disadvantaged women and their families in High Wycombe.

FOLLYFOOT HEALING WITH HORSES

The funding will cover the cost of running an equine therapy project, working with people at risk of social isolation and loneliness.



FOODCYCLE

Support for weekly community meals in Aylesbury and High Wycombe, tackling food poverty and loneliness.

HECTOR'S HOUSE

Project funding for free safeTALK training, aimed at equipping participants to recognise suicidal tendencies and signpost to support.

HOPE AFTER HARM

Core support to Hope After Harm's services providing support to victims, offenders and families involved in or impacted by criminal, civil and family justice issues.

HORIZON SPORTS CLUB

Funding to enable inclusive sporting opportunities for young people with physical, mental or sensory disabilities.

IVER YOUTH AND COMMUNITY SERVICES

Funding to expand the youth club sessions, including additional life skills and coaching for young people.

JEDIDIAH

Core funding to support people in Buckingham who are struggling with access to food, toiletries and heating.

KHEPERA

Funding to increase the capacity of the organisation's gleaning work, reducing food waste and providing healthy and nutritious food for the local community.

LINDENGATE

Core funding for Lindengate's social and therapeutic horticulture, which helps improve mental health by bringing people together, offering chances to learn new skills and boosting self esteem.

LITTLE CHALFONT COMMUNITY LIBRARY

Support for services within the library for young mothers, older people and young people.

MINDING THE GAP EDUCATION CIC

Funding towards educational support for primary and secondary school children, children with learning difficulties and children for whom English is not a first language, whose parents cannot afford paid extra tuition.

MISSENDEN WALLED GARDEN

Core funding for working in partnership with adults with learning disabilities and enriching their lives through Social Therapeutic Horticulture.

MURSLEY SPORTS ASSOCIATION

Installation and maintenance of an accessible play and exercise area for the benefit of the local community.

OASIS PARTNERSHIP

Support the organisation's social prescription work, providing community, non-clinical solutions for people at risk or living with addiction.

PRISMA GROUP CIC

Development of LGBTQ+ training for teachers and youth workers and delivery of the Loud & Proud youth forum.

ROAD FARM COUNTRYWAYS CIC

Funding to sustain the horticultural therapy and wellbeing work on the farm, specifically aimed at young people with additional needs.

SPACE

Support for mental health services in Aylesbury including counselling, drop-ins and group activity.

SPORTS INC

Mentoring programme aimed at creating vocational experience for young people in the music industry, targeted at minoritised communities.

ST MARY'S CHURCH, PRINCES RISBOROUGH

Funding for a monthly lunch club at St Mary's Church for the elderly.

THE COUNTRY FOOD TRUST

Funding to bring the Country Food Trust model of taking donated game meat and making into nutritious meals into Buckinghamshire foodbanks and community kitchens.

THE COUNTRY TRUST

Funding to deliver a Food Discovery Programme for children at Oak Green Primary, Aylesbury.

THE HAIROUN ELDERLY DAY CENTRE

Core funding to support daytime care, social engagement, and support services to older people in High Wycombe.

THE NARRATORS LENS CIC

Supporting the core mission of the organisation: to use photography to reduce stigma, raise awareness of societal issues and provide vocational training.

TRAILBLAZERS MENTORING

Funding for mentoring young offenders near release, providing financial, wellbeing and vocational support.



VANA TRUST ORGANIC FARM

Core funding for the organisation to deliver horticultural therapy, social inclusion and cooking club for people with learning disabilities.

WADDESDON BOWLS CLUB

Funding to extend the paving and renew internal equipment for the new clubhouse for the benefit of members, visiting bowlers and Waddesdon WI.

WEDNESDAY CLUB WADDESDON

Support for the provision of companionship, mental and physical stimulation, good food and friendship for elderly local residents and their families.

WENDOVER AND VILLAGES UKRAINIAN SUPPORT GROUP (WAVUS)

Funding to run weekly English classes, art therapy, well-being courses and educational trips to places of interest.

WENDOVER COMMUNITY LIBRARY TRUST

Capital funding to upgrade the existing library gardens with a bespoke open space which will be fully accessible for the local community.

WENDOVER YOUTH CENTRE LIMITED

Funding to expand the 1:1 mentoring programme and mental health services for young people.

WINSLOW ACTIVITY CLUB

Funding for the provision of activities for people with severe learning and physical disabilities.

WYCOMBE COMMUNITY RADIO - CIC

Core funding for the local community radio station for High Wycombe.

WYCOMBE RENT DEPOSIT GUARANTEE SCHEME

Core funding to help local residents who are homeless, in hostels or in poor housing to access better accommodation.

WYCOMBE YOUTH ACTION

Funding for multi-generational and conservation projects to provide young people the chance to give back to their community.

Other Grants Awarded throughout the year

Cost of Living Response

Recognising the continued challenges presented by the cost of living crisis, we furthered our efforts to provide additional support to our grant-holders and the communities they serve. Like last year, organisations supported by the Rothschild Foundation faced sharp rises in delivery costs due to soaring inflation and increased demand for their help. Those offering debt, housing and advice services to financially insecure communities were on the front-line. Staff were burnt out and volunteers in short-supply, many looking for employment beyond the charity sector to meet their own financial responsibilities.

Fifty organisations working in the Foundation's core areas of focus; culture, regenerative food and farming and young people, were awarded a 10% uplift to their existing grants. This funding was offered with no additional reporting requirements.

Closer to home, the Rothschild Foundation provided a Financial Assistance Fund offering grants of up to £500 to staff facing unexpected or unaffordable costs. Since launching in April 2023, forty-eight applications have been approved and £25k of funds have been allocated.

Royal Marsden Cancer Charity, Ever After Garden



From time to time, grants are approved that fall out of the key strategic priorities. The Trustees have the discretion to approve funding to organisations or causes that are particularly important to them or are reacting to a crisis or situation.

CONSERVATION COLLECTIVE

Funding for the Ionian Environment Foundation to support environmental conservation projects on the Greek Island of Corfu.

FRESHWATER HABITATS TRUST

Towards the expansion of GroWet into Buckinghamshire, a plant conservation and community engagement programme aiming to reverse the decline in rare wetland plants.



BRITISH HEART FOUNDATION

Donation in memory of Valerie Drummond.

CHILTERN MUSIC THERAPY

Price matching of Yuval Zomer's children's books sold in Waddesdon Manor's retail shop over December 2023 as part of Waddesdon's Charity of the Year programme.



GREAT ORMOND STREET HOSPITAL

Grant for Felicity Nowell's marathon in aid of GOSH.

LADY GARDEN FOUNDATION

Funding for the Royal Marsden Cancer Charity, promoting education and awareness of gynaecological cancers..

MAGGIE'S CENTRE

Capital funding for a new Maggie's centre alongside Northampton General Hospital, to provide psychological and practical support for people diagnosed with cancer and their families.

MAKE A WISH FOUNDATION

Granting wishes to significantly improve the quality of life of children living with a critical illness in the UK.

NACRO



Funding to support the Better Justice Partnership project, identifying and evaluating the most effective tactics to build government support for criminal justice reform.

ROYAL MARSDEN CANCER CHARITY

Funding contributing to the 'Ever After Garden', a tranquil haven where everyone everywhere can remember treasured friends and family they have lost.

UKRAINIAN FAMILY SUPPORT GRANT

Towards the cost of living for a Ukrainian family hosted in Waddesdon.

Working with Waddesdon

As well as funding, we look for ways for the Foundation’s wider assets to support our charitable objectives. Waddesdon Manor is the golden thread that connects all our work, inspiring our funding priorities and allowing us to deliver our charitable objectives ‘on home soil’.



Dining Room, Waddesdon Manor. Photo: Will Pryce

DIALOGUES

Through our Dialogues programme we aim to convene partners in the Rothschild Foundation's areas of interest, stimulating discussion and debate which can lead to collective action. Creating connection between our grants programme and Waddesdon Manor is also a priority.

This year, students and patrons from the Royal Drawing School visited Waddesdon to view Catherine Goodman’s exhibition and take inspiration from her work and the house and gardens for their own artworks. Local creative organisations in High Wycombe, Buckinghamshire’s Library Service and New University came together to plan coordinated and innovative cultural programming.

To support our ambitions for a more sustainable food and farming system, we convened a cross-sector conversation with Buckinghamshire-based partners in industry, agriculture, health, charitable and social enterprise sectors, which will result in a joined-up communication and action plan. On a hyper-local level, we brought volunteers and charities in Amersham and Chesham together to explore more sustained, community-led action in local food provision.

We were delighted that over one hundred representatives from Buckinghamshire charities could join our first grantee networking event at The Dairy, Waddesdon. Guests connected with their peers and were encouraged by our keynote speaker, Gavin Stride and his moving vision of hope. They also benefited from interactive workshops to develop skills and knowledge in sustainability and data, delivered in partnership with the Bucks Data Exchange and Waddesdon’s Sustainability Lead, Dickon Leigh-Wood.

The keynote speech delivered by Gavin was inspiring, and his insights and perspective set a positive tone for the day. The breakout room sessions fostered an environment of interaction and engagement that I personally found incredibly valuable.”



THE WADDESDON TRAINING PATHWAY

The Pathway programme offers fully paid (National Living Wage) internship opportunities for those interested in exploring a career in the heritage and conservation sectors. The internships provide a year long programme of training and development as well as living accommodation on site at Waddesdon.

Prospective internships were developed throughout 2023 and eight posts were made available in Hospitality (collaboration between Five Arrows, Events, and Manor Catering), Wine (WWL and RWL working together), Heritage Operational Management (behind the scenes with maintenance, health & safety, security and general management), Visitor and Conservation Management (Visitor Experience, Volunteering, Stewards), Marketing, Gardens and Sustainability, Aviary, and in RF Management (experience in HR, Accounting, Grants). Eighty-six applications were received for the scheme, significantly higher than our previous internship programme. Applicants ranged locally and as far as Canada and were predominantly aged 18-24 years. The current cohort will complete their internships in September with recruitment for the second cohort commencing in April 2024. As this is the pilot year of the programme, development is being supported by external evaluation.



CHARITY OF THE YEAR

As voted by staff and volunteers, the 2023 Waddesdon Charity of the Year was Chiltern Music Therapy.

Chiltern Music Therapy provides Music Therapy, Neurologic Music Therapy and Community Music services both digitally and in person across Buckinghamshire and England. As well as providing an unrestricted grant of £20,000, the Charity of the Year programme involves a range of events aimed at raising the profile of the charity. This year, these included several seasonal walks, a picnic, quiz night and price matching of a children's book over Christmas, in our retail shop. A memorable highlight was an 'Inclusive Singing Afternoon' which took place at Waddesdon Manor in September 2023 with the talented Choir on the Green and the charity's community groups, 'Let's Sing' and 'Silver Singers' performing and providing visitors to Waddesdon with a truly magical experience.





SCHOOLS ACCESS FUND

The Rothschild Foundation and Waddesdon Manor jointly run a Schools Access Fund offering grants to cover the costs of school trips to the manor and gardens. Grants of up to £1,000 are available for transport and staff costs, workshop fees and National Trust Education Group Access Pass and are prioritised for schools with pupils from disadvantaged backgrounds. In 2023/24 the Schools Access fund supported 41 Buckinghamshire Schools to visit Waddesdon.

STAFF SPONSORSHIP

Members of staff at Waddesdon and the Rothschild Foundation can apply for a donation of up to £500 in support of a chosen charity. Over the year, 20 staff sponsorship grants were made to organisations with challenges including swimming in a ice cold lake for Crisis UK, walking 15000 steps a day during freezing temperatures in January for Rainforest Concern, and cycling 100km through London overnight for Jo's Cervical Cancer Trust, Ovarian Cancer Action and Breast Cancer Now.

AVIARY

Waddesdon Manor continues to provide a home within the beautifully restored Aviary to many colourful and exotic birds with one third of the species being at risk of extinction. Waddesdon participates in captive breeding programmes with the aim of reintroducing birds into their native habitat. The Aviary maintains the status as a zoo by providing grants to partner conservation organisations. This year, £10,000 was granted to Cikananga Wildlife Center in Indonesia to support the preservation of endangered and critically endangered Songbirds. A grant of £4,600 was also made to The Universitas Indonesia to support their research and conservation campaign of the critically endangered Banggai Crow.



Waddesdon Aviary.
Photo: Chris Lacey

FURTHER COLLABORATIONS WITH WADDESDON MANOR

The Rothschild Foundation works closely on projects with Waddesdon Manor, including the following:

- Support of the Digital Ferdinand project, digitising the writings of Ferdinand de Rothschild and making them accessible through the Waddesdon website.
- Production of an exciting environmental exhibition at the Waddesdon coach house in collaboration with National History Museum Tring.
- Continuation of the Jewish Country Houses project at Waddesdon Manor.



Rothschild Foundation Trustees

The Foundation is run by a board of Trustees, a small professional staff team, and supported by a wider network of affiliated organisations and independent advisors.

Lord Rothschild OM GBE CVO (To February 2024)

The Hon. Hannah Rothschild CBE, Chair (From February 2024)

The Hon. Emmy Freeman-Attwood

Professor Deborah Swallow

Francesco Goedhuis

Peter Troughton CVO CBE

Christopher Mark Kemp

S.J.P. Trust Corporation Limited (corporate Trustee)

Rothschild Foundation Staff

Pippa Shirley, Director of Waddesdon

Victoria Lovatt-Morris, Director of People

Ellie Stout, Director of Grants

Dave Silvester, Chief Financial Officer

Sophie Hedley, Marketing & Communications Director

Leona Forsyth, Senior Grants Manager

David Terrace, Grants Manager

Rowena Mitchell, Operations Manager

Karen Nicoll, Grants Officer

Christopher Campbell-Kelly, Executive Assistant to the Executive Board

